

CONTACT 9830245045(smc@sudhaind.com) www.sudhaind.com

1. (A) METAL SAVINGS (0.1-1.0%) BY SUPICK (LAB TRAIL CALCULATION WITH FORMULA TABLE)

SUDHA INDUSTRIES CALCULATION						
INHIBITOR EFFICIENCY DETERMINATION METHOD CALCULATION FOR LAB TRAIL						
	1ST WEIGHT gm	2ND WEIGHT gm	DIFF. WEIGHT gm	% OF METAL LOSS	REMARK	
SA,MPLE1	39.7506	39.4200	0.3306	0.8317	WITHOUT INHIBITOR	
SA,MPLE1	32.4537	32.2810	0.1727	0.5321	WITH SUPICK INHIBITOR(4 Kg/10KL)	

FORMULA	▶	(1ST WEIGHT-2ND WEIGHT)*100
% OF METAL LOSS=		1ST WEIGHT
RESULT		
PER MT LOSS WITHOUT INHIBITOR	8.3169	Kg
PER MT LOSS WITH INHIBITOR	5.3214	Kg
DIFFERENCE PER MT LOSS (SAVING)	2.9954	Kg
INHIBITORE EFFICIENCY	36.016	%

SUDHA INDUSTRIES
Manufacturer of Water Treatment and Specialty Chemicals
 18, R N Mukherjee Road, 2nd Floor, Kolkata- 700001
 TEL: +91-33- 22108406, Mob / Whatsapp: +91 9830245045
 Email: info@sudhaind.com,
 Website: www.sudhaind.com

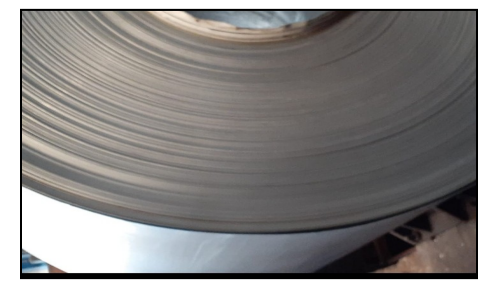
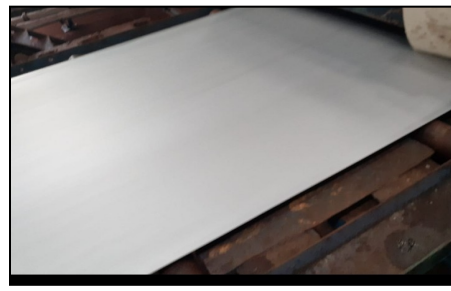
COST SAVINGS

HR PRICE	48	Rs / Kg
HR PICKLING PROD.	40000	MT / MONTH
SAVINGS	Rs==>	5751223

1. (B) METAL SAVINGS (0.1-1.0%) BY SUPICK (PLANT TRAIL SUPICK CHEMICAL DATA SHEET)

Thick	Width	System (invoice) Wt	PKL EXIT HR COIL WT(before Pickling)	PKL O/P WT (after pickling)	Speed (MPM)	End Cuts Wt(MT)	ID RING (MT)	As per Actual WT @ PKL calculation				As per system (invoice) Wt calculation			
								PKL Loss%	end cut %	id ring %	yield%	PKL Loss %	end cut %	id ring %	Yield %
2.60	904	13.290	13.290	13.230	60	0.015	0.000	0.34	0.11	0.00	99.55	0.34	0.11	0.00	99.55
2.60	904	13.090	13.090	13.020	60	0.020	0.000	0.38	0.15	0.00	99.47	0.38	0.15	0.00	99.47
2.60	904	13.290	13.290	13.210	60	0.015	0.000	0.49	0.11	0.00	99.40	0.49	0.11	0.00	99.40
2.60	904	13.300	13.300	13.230	55	0.015	0.000	0.41	0.11	0.00	99.47	0.41	0.11	0.00	99.47
2.60	904	13.230	13.230	13.170	58	0.015	0.000	0.34	0.11	0.00	99.55	0.34	0.11	0.00	99.55
2.60	904	13.255	13.255	13.185	57	0.020	0.000	0.38	0.15	0.00	99.47	0.38	0.15	0.00	99.47
2.60	904	13.490	13.490	13.410	55	0.020	0.000	0.44	0.15	0.00	99.41	0.44	0.15	0.00	99.41
2.60	904	13.270	13.270	13.200	65	0.010	0.000	0.45	0.08	0.00	99.47	0.45	0.08	0.00	99.47
2.60	904	13.420	13.420	13.370	59	0.015	0.000	0.26	0.11	0.00	99.63	0.26	0.11	0.00	99.63
2.60	904	13.155	13.155	13.090	60	0.010	0.000	0.42	0.08	0.00	99.51	0.42	0.08	0.00	99.51
Avg		132.790	132.790	132.115	58.900	00.155	00.000	0.39	0.12	0.00	99.49	0.39	0.12	0.00	99.49

2 BRIGHTER & SMOOTH SURFACE METAL FINISH BY SUPCLICK,SURINSE



3 CUT DOWN OF HCL FUMES BY SUPCLICK

4 SUPCLICK INHIBITOR HELPS IN REDUCING PTTIING MARK

CUT DOWN OF HCL FUMES

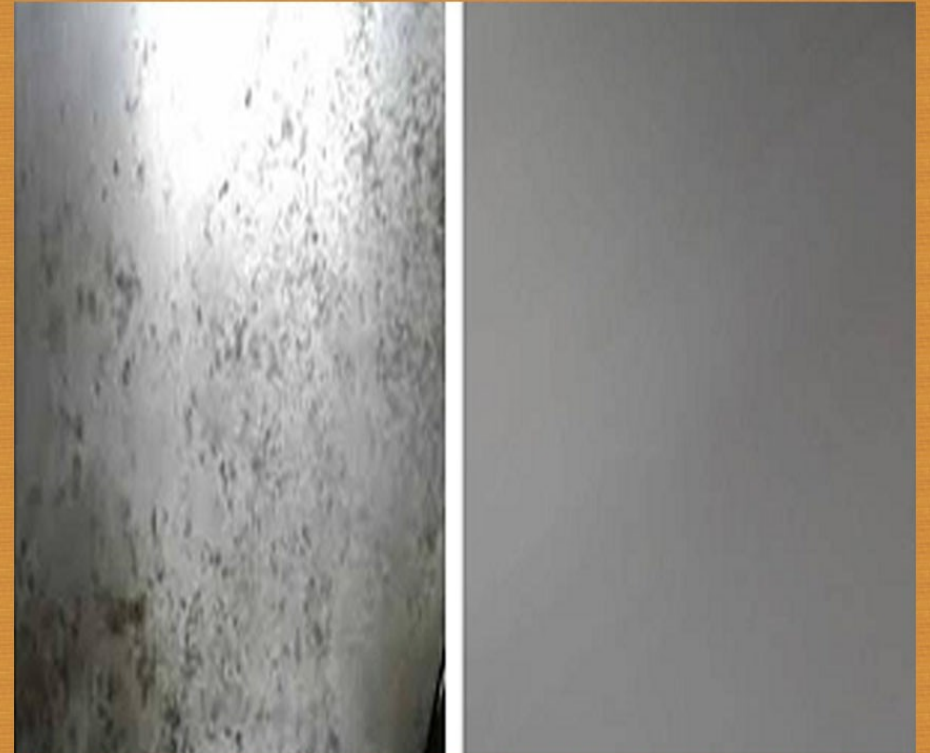


WITH OUT INHIBITOR



**WITH SUPCLICK INHIBITOR
CUT DOWN OF HCL FUMES**

SUPCLICK CHEMICAL HELPS IN REDUCING PTTIING



5 CHEMICAL COLOR

COLORLESS CHEMICAL

- OTHER INHIBITOR
- SUPICK INHIBITOR



TRANSPARENT

6 SUPICK INHIBITOR REDUCES STAIN MARK

SUPICK CHEMICAL REDUCES STAIN MARK



7 INCREASES PICKLING BOTH LINE EFFICENCY (LESS ACID CONSUPTION AND LESS QUATITY EFFUET

8 BEING AN AMINE BASE ,IT DOSE NOT FORM ANY BYPRODUCT AND CAN BE EASILY DESPOSE WITH WASTE SOLUTION AFTER USE.

RINSE TANK ADDITIVE BENEFITS :

1. IMPARTS HIGH GLOSS AND SHINE .
2. RETARDS RUST FORMATION ON THE SURFACE OF COIL
3. COMBATS ACID CARRY OVER FROM PICKLING TANK IN RINSE TANK
4. COMPATIBLE WITH OTHER TREATMENT CHEMICALS.
5. IMPROVES QUALITY OF RINSE TANK WATER.
6. COMPLETELY BIODEGRADABLE CHEMICAL.
7. GIVES A SMOOTH SURFACE WHICH ENHANCES BONDING OF COLOUR COATING CHEMICALS

